

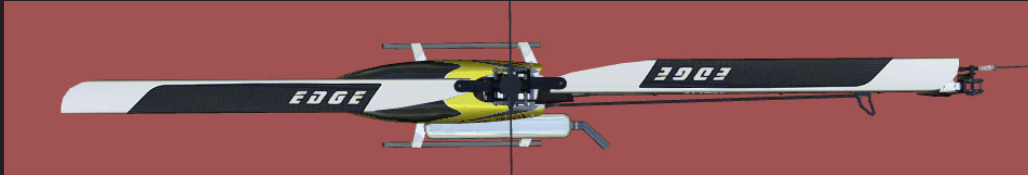
It is advised to make a back-up of the original files before the new files are copied

1) Trex 700 install info (FBL and Flybar version + matching blurs):

Files should be placed in:

c:\Program Files\PhoenixRC\resources\textures\aircraft\

Preview:



2) Velocity 50 Install info (FBL, Flybar version and tail blades + matching blurs):

Files should be placed in the documents folder, ..\Documents\PhoenixRC\Schemes\

In order to use these blades correctly, the part "SCHEMENAME" should be renamed to match the scheme name.

E.g. the scheme for the V50 is called Velocity50_OEM.jpg, than all files in the zip will need to be renamed to:

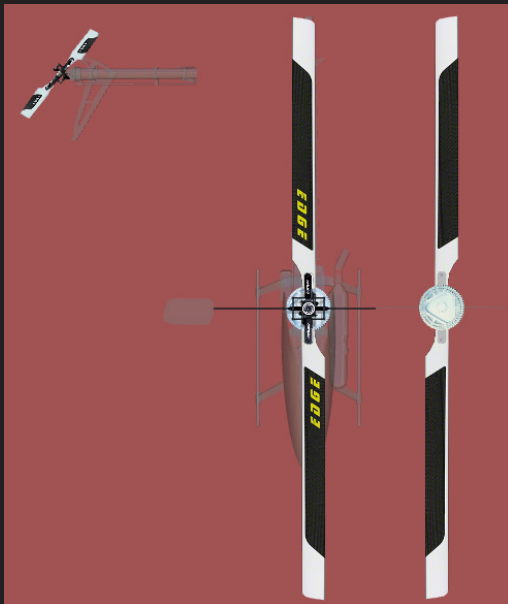
standardTailRotorBlur#OEM.bmp

velocity50_blades#OEM.bmp

velocity50_blades2#OEM.bmp

velocity50_rotorBlur#OEM.bmp

Preview, tail and top/bottom blades:



Install Instructions

EDGE

rotorblades